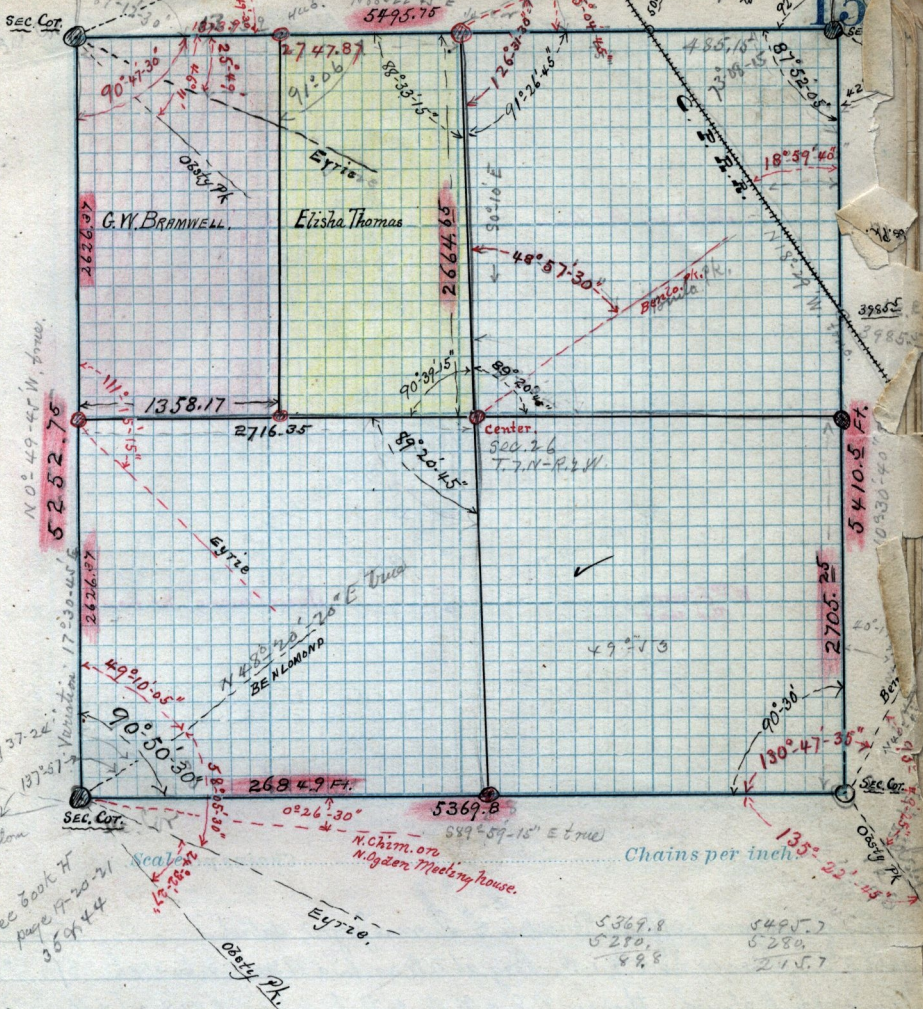


SEC. 26 T7-N-R2-W



N. 0° 49' 45\" W. 87.00
 5252.76
 Variation 1° 30' 45\" E
 2626.97
 137.22
 (19) 57
 Sec Book H
 page 42-21
 35 of 44

15
 395.5
 3985
 5410.5 FT
 10930-40
 2705.25

5369.8
 5280.
 88.8
 5495.7
 5280.
 215.7

Copy of deed from JOSEPH ALLEN to THOMAS JOICE dated Feb. 29-1876, J, 497,
 Part of N. W. 1/4 Sec 19 Sp. 6, N. R. 1. W., Brg. at S. E. cor of said 1/4 Sec, W 2.81 ch,
 to W. bank of Plain City Water duct. - N 1/2 W, 16.25 chains E 3.17 ch, 316.22 ch
 to brg. 4.85 a. Copy of deed from Henry Tracy to Thomas Joyce, dated
 Sept 17. 1874, I-415, Brg. at S. W. cor of N. E 1/4 Sec 19 Sp. 6 N. R. 1- W,
 thence, E 4.32 ch, N 25.0 ch, E 4.25 ch, N 7° W 7.70 ch, N 34° 14' W,
 9.85 ch, to middle of street, N 89 1/2° W, 2.06 ch, S 16.22 ch to brg. 10.23 ft.
 Copy of deed from Wm. Calmer to Thomas Joyce, dated Sep. 17. 1874. J-17, Pt. S. W. 1/4 Sec 19
 T-6-N-R-1-W, Brg. N. E. cor, W 2.81 ch to W. bank Plain City Canal, S 3 1/4° E 5.84 ch, S 79 1/2° E 2.57
 ch. to Sec. line, N. 6.30 ch to brg. 1.6 a.